

**HUNTINGDONSHIRE DISTRICT COUNCIL**

<b>Title/Subject Matter:</b>	Interim Review of Polling Districts, Polling Places and Polling Stations
<b>Meeting/Date:</b>	Council – 22nd February 2017
<b>Executive Portfolio:</b>	Councillor G J Bull, Deputy Leader
<b>Report by:</b>	Elections and Democratic Services Manager
<b>Ward(s) affected:</b>	All

---

**Executive Summary:**

The Local Government Boundary Commission for England (LGBCE) has recently completed a review of the electoral arrangements for Cambridgeshire County Council and Huntingdonshire District Council. As a result of these electoral reviews it has been necessary for the Council to review some of its polling districts, polling places and polling stations.

Consultation on the proposed changes was undertaken between November 2016 and January 2017 with all electors and interested parties and the full consultation was hosted on the Council's website.

**Recommendations:**

**That the following changes be made to the Council's Schedule of Polling Districts and Polling Places –**

- (a) that a new polling district (CT) be created in Huntingdon as the new electoral division boundaries of Huntingdon North and Hartford division and Godmanchester and Huntingdon South division are not coterminous with the existing polling district boundaries of CJ and CH to allow for electors in this polling district to vote in the correct electoral division as shown on the map attached at Appendix B;**
- (b) that electors in the area affected by the lack of coterminosity by the new District wards of Huntingdon North ward and The Stukeleys ward not being coterminous with the existing polling districts of CP and CR be moved from CR to CP on publication of the revised register on 1st December 2017 as shown on the map attached at Appendix B;**
- (c) that a new polling district (EX) be created in St Ives as the new electoral division boundaries of St Ives North and Wyton division and St Ives South and Needingworth division are not coterminous with the existing polling district boundaries of EC and ED to allow for electors in this polling district and new town ward of Beech to vote in the correct electoral division as shown on the map attached at Appendix C;**

- (d) that electors in the area affected by the lack of coterminosity by the new District wards of St Ives East ward and St Ives West ward not being coterminous with the existing polling districts of ED and DY be moved from ED to DY on publication of the revised register on 1st December 2017 as shown on the map attached at Appendix C;**
- (e) that a new polling district be created in Fenstanton for the Fenstanton South parish ward as the new County electoral divisions are not coterminous with the new District ward boundaries in this area and the remaining electors in polling district BJ re-named as Fenstanton North parish ward to be created on publication of the revised register on 1st December 2017 to ensure that elections can be run using the new boundaries. A copy of the map detailing the boundaries is attached at Appendix D;**
- (f) that polling district EL be amended to be coterminous with the new St Neots Priory Park Town ward on publication of the revised register on 1st December 2017 to ensure that elections can be run using the new boundaries as shown on the map attached at Appendix E;**
- (g) that a new polling district be created for the new St Neots Church Town ward and polling district EJ be amended to be coterminous with the new St Neots Priory Park Town ward on publication of the revised register on 1st December 2017 to ensure that elections can be run using the new boundaries as shown on the map attached at Appendix E;**
- (h) that polling district EN split by the new District Wards of St Neots Priory Park and Little Paxton ward and St Neots Eatons ward be amended to be coterminous with the new St Neots Eaton Ford Town ward and a new polling district be created for the Crosshall Town ward on publication of the revised register on 1st December 2017 to ensure that elections can be run using the new boundaries. A copy of the map detailing the boundaries is attached at Appendix E; and**
- (i) that a separate polling district FQ be created for Alconbury Weald to take account of the continued planned development as shown on the map attached at Appendix F.**

## **1. PURPOSE OF THE REPORT**

- 1.1 The purpose of this report is to consider the outcome of consultation undertaken on an interim review of polling districts and polling places following the completion of a recent review of electoral arrangements by the Local Government Boundary Commission for England (LGBCE) of Cambridgeshire County Council and Huntingdonshire District Council.

## **2. BACKGROUND**

- 2.1 The Review of Polling Districts and Polling Places (Parliamentary Elections) Regulations 2006 requires each authority to undertake a review of all of the polling districts and polling places in its area on a regular basis and the Electoral Registration and Administration Act 2013 requires each authority to complete and carry out a review in a 16 month period beginning on 1st October of every fifth year after 1st October 2013. The last review was undertaken in October 2013 and although there is no requirement to undertake a further review it has been necessary to undertake an interim review as a result of changes to electoral boundaries and the impact that these have had on specific polling districts and polling places.
- 2.2 All wards within Huntingdonshire are divided into polling districts which form the basis upon which the register of electors is produced. Most are defined by parish boundaries, but there are exceptions. The Council is responsible for dividing its area into polling districts and for keeping polling districts under review. The Council must also define a polling place for each of its polling districts within which the polling station is located.

## **3. POLLING DISTRICTS AND POLLING PLACES REVIEW**

- 3.1 The review of electoral arrangements for Cambridgeshire County Council and Huntingdonshire District Council has resulted in the re-warding of boundaries within Huntingdon, St Ives, Fenstanton and St Neots. The boundaries in some of these areas are no longer coterminous for different elections and it has been necessary to create separate polling districts for implementation for the new Cambridgeshire County Council divisions for the elections in May 2017 whilst maintaining the existing arrangements for the District wards. The changes to implement the new District wards for whole Council elections in May 2018 will be undertaken on publication of the revised register on 1st December 2017 and will result in the deletion of some of these temporary polling districts.
- 3.2 With the exception of the changes proposed, it is necessary to maintain the existing polling districts and wards within the towns to allow for any by-elections to be run on the current boundaries pending the changes to be implemented for whole Council elections in May 2018.

### **Huntingdon**

- 3.3 The LGBCE has split the parish of Huntingdon into eight Town wards rather than the three Town wards that currently exist. At the next scheduled election in Huntingdon, Town Councillors will be elected to represent the eight Town wards. At the County Council elections in May 2017, the existing Town wards will be split into three different County electoral divisions and at the District Council elections in May 2018, the eight Town wards will be split into four different District wards. It is also worth noting that the Council is unable to change the warding arrangements of the Town Council as they have been imposed by the LGBCE.

- 3.4 The new electoral division boundaries of Huntingdon North and Hartford division and Godmanchester and Huntingdon South division are not coterminous with the existing polling district boundaries of CJ and CH and as a result a new polling district (CT) has been created to allow for electors in this polling district to vote in the correct division. Electors in this polling district will now vote at Hartford Village Hall, rather than the MS Therapy Centre.
- 3.5 The new District wards of Huntingdon North ward and The Stukeleys ward are not coterminous with the existing polling districts of CP and CR and electors in this area will be moved from CR to CP on publication of the revised register on 1st December 2017.
- 3.6 Appendix B shows a map identifying the proposed new polling district in Huntingdon and area to be moved on publication of the revised register.

### **St Ives**

- 3.7 The LGBCE have split the parish of St Ives into four Town wards, rather than the three Town wards that currently exist. At the next scheduled election in St Ives, Town Councillors will be elected to represent the four Town wards. At the County Council elections in May 2017, the existing Town wards will be split into two different County electoral divisions and at the District Council elections in May 2018, the four Town wards will be split into three different District wards.
- 3.8 The new electoral division boundaries of St Ives North and Wyton division and St Ives South and Needingworth division are not coterminous with the existing polling district boundaries of EC and ED. Concern was expressed through the consultation that electors should continue to vote at their existing polling station. Unfortunately as this would be in a new County division it has been necessary to create a new polling district (EX) to allow for electors in this polling district and new town ward of Beech to vote in the correct division. Electors in this polling district will now vote at the Crossways Church, rather than One Leisure Outdoor Centre.
- 3.9 The new District wards of St Ives East ward and St Ives West ward are not coterminous with the existing polling districts of ED and DY and electors in this area will be moved from ED to DY on publication of the revised register on 1st December 2017.
- 3.10 Appendix C shows a map identifying the proposed new polling district in St Ives and area to be moved on publication of the revised register.

### **Fenstanton**

- 3.11 As a result of the District Council electoral review, the LGBCE have warded the parish of Fenstanton. At the next scheduled election in Fenstanton, residents will elect parish councillors to two separate parish wards. Each of these wards have been placed in different District wards, Fenstanton North parish ward comprising a revised polling district BJ in Fenstanton District ward and Fenstanton South parish ward in St Ives South District ward.
- 3.12 The new County electoral divisions are not coterminous with the new District ward boundaries in this area and as a result a new polling district will be created on publication of the revised register on 1st December 2017 to ensure that elections can be run using the new boundaries.

- 3.13 Appendix D shows a map identifying the new polling districts in Fenstanton.

### **St Neots**

- 3.14 The LGBCE have split the parish of St Neots into eight Town wards, rather than the four Town wards that currently exist. At the next scheduled election in St Neots, Town Councillors will be elected to represent the eight Town wards. At the County Council elections in May 2017, the existing Town wards will be split into three different County electoral divisions and at the District Council elections in May 2018, the eight Town wards will be split into four different District wards.
- 3.15 The new District wards in St Neots are not coterminous with the new County electoral divisions. As a result various changes will need to be made to the existing polling districts. Polling district EL will be amended to be coterminous with the new St Neots Priory Park Town ward. Electors in this polling district will continue to vote at Longsands Academy.
- 3.16 A new polling district will be created for the new St Neots Church Town ward and polling district EJ will be amended to be coterminous with the new St Neots Priory Park Town ward. Electors in EJ and the new polling district will continue to vote at the St Neots Voluntary Centre.
- 3.17 The polling district of EN will be split by the new District Wards of St Neots Priory Park and Little Paxton ward and St Neots Eatons ward and will need to be amended to be coterminous with the new St Neots Eaton Ford Town ward and a new polling district created for the Crosshall Town ward. Electors in the amended polling district EN and new polling district will continue to vote at The Scout Hall and an alternative venue may need to be sought for the new Crosshall Town ward polling district.
- 3.18 The changes to these polling districts will be created on publication of the revised register on 1st December 2017 to ensure that elections can be run using the new boundaries.
- 3.19 Appendix E shows a map identifying the new polling districts in St Neots.

### **Alconbury Weald**

- 3.20 Development at Alconbury Weald is sited within the parish of The Stukeleys, encompassing Great Stukeley and Little Stukeley. Currently although there are only a properties occupied it is predicted that by March 2018 250 properties will have been completed. Any electors resident there will have to visit the Little Stukeley polling station currently. As Alconbury Weald is detached from the village of Little Stukeley, coupled with the proposed future development, it would warrant Alconbury Weald to have a dedicated polling station in the future that is local to them. As such, Alconbury Weald has been set up as a separate polling district FQ to take account of the continued planned development.
- 3.21 Appendix F shows the proposed new polling district at Alconbury Weald.

## **4. CONSULTATION**

- 4.1 As this is an interim polling district and polling places review, many of the changes outlined above are as a result of the review of electoral arrangements of Cambridgeshire County Council and Huntingdonshire District Council and must be made to ensure that all electors have reasonable facilities for voting as are practicable in the circumstances.
- 4.2 The Council was required to undertake a consultation on the proposed changes that was undertaken between 25th November 2016 and 6th January 2017 with all electors and interested parties and the full consultation was hosted on the Council's website. Details were also sent to all County and District Councillors and Town and Parish Clerks.
- 4.3 Appendix G details the responses received to the consultation. There were few responses received to the proposed changes.
- 4.4 It is worth noting that the Council is responsible for designating polling places whereas the Returning Officer is responsible for determining where the polling stations are situated. Whilst polling stations are not formally part of this review, it is essential that the Returning Officer have regard to the adequacy and suitability of premises used.
- 4.5 Arising from the representations made, the register will be republished to reflect some of these changes in February 2017 and the remaining changes on publication of the revised register on 1st December 2017. All changes will be reflected in the revised Schedule of Polling Districts and Polling Places as set out in Appendix A.

## **5. RISKS**

- 5.1 Failure to adopt these new polling district boundaries will not allow the Returning Officer to run effective elections.

## **6. LEGAL IMPLICATIONS**

- 6.1 There are no significant legal implications.

## **7. REASONS FOR THE RECOMMENDED DECISIONS**

- 7.1 The Local Government Boundary Commission for England have recently completed a review of electoral arrangements for Cambridgeshire County Council and Huntingdonshire District Council. As a result of changes to boundaries within the District and the impact of electoral Divisions and District wards no longer being coterminous in certain areas, it has been necessary to review the polling districts and polling places to ensure arrangements are made to allow electors have reasonable access to voting.

## **8. LIST OF APPENDICES INCLUDED**

Appendix A – Schedule of Existing Polling Districts and Polling Places

Appendix B – Map Showing Proposed New Polling Districts in Huntingdon

Appendix C – Map Showing Proposed New Polling Districts in St Ives

Appendix D – Map Showing Proposed Polling Districts in Fenstanton

Appendix E – Map Showing Proposed Polling Districts in St Neots

Appendix F – Map Showing Proposed Polling District of Alconbury Weald

## Appendix G – Consultation Responses

### **BACKGROUND PAPERS**

Website Consultation Document – Interim Review of Polling Districts and Polling Places 2016

Review of Polling Districts, polling places and polling stations guidance – The Electoral Commission

### **CONTACT OFFICER**

Lisa Jablonska, Elections and Democratic Services Manager

Tel No: (01480) 388004

Email: [lisa.jablonska@huntingdonshire.gov.uk](mailto:lisa.jablonska@huntingdonshire.gov.uk)

**Appendix A - Proposed Revised New List of Existing Polling Districts and Polling Places (Structured by current District Wards for reference only)**

<b>WARD NAME</b>	<b>POLLING DISTRICT</b>	<b>PD CODE</b>	<b>DESCRIPTION OF POLLING DISTRICT</b>	<b>POLLING PLACE</b>	<b>PREFERRED POLLING STATION</b>
<b>Alconbury &amp; the Stukeleys</b>	Alconbury	AC	Alconbury Parish	Alconbury	Alconbury Memorial Hall, School Lane, Alconbury
	Alconbury Weston	AD	Alconbury Weston Parish	Alconbury Weston	57 Highfield Road, Alconbury Weston
	Great Stukeley	FH	The Great Stukeley part of The Stukeleys Parish	Great Stukeley	Gt Stukeley Village Hall, Great Stukeley
	Little Stukeley	FJ	The Little Stukeley part of The Stukeleys Parish	Little Stukeley	Lt Stukeley Village Hall, Little Stukeley
<b>Brampton</b>	Brampton	AH	Brampton Parish	Brampton	Brampton Community Centre, High Street, Brampton
	Grafham	BM	Grafham Parish	Grafham	Grafham Village Hall
	Perry	DM	Perry Parish	Perry	Perry Church, Perry
<b>Buckden</b>	Buckden	AM	Buckden Parish	Buckden	Buckden Methodist Hall, Buckden
	Diddington	BA	Diddington Parish	Buckden	
	Southoe	FD	Southoe & Midloe Parish	Southoe	Southoe Village Hall, Southoe



<b>WARD</b>	<b>POLLING DISTRICT</b>	<b>PD CODE</b>	<b>DESCRIPTION OF POLLING DISTRICT</b>	<b>POLLING PLACE</b>	<b>PREFERRED POLLING STATION</b>
<b>Earith</b>	Bluntisham	AG	Bluntisham Parish	Bluntisham	Bluntisham Village Hall, Recreation Field, Mill Lane, Bluntisham
	Earith	BB	Earith Parish	Earith	Earith Parish Hall, Earith
	Holywell cum Needingworth	CD	Holywell cum Needingworth Parish	Needingworth	Needingworth Village Hall, Needingworth
<b>Ellington</b>	Barham & Woolley	AF	Barham & Woolley Parish	Spaldwick	Spaldwick Community Room, Spaldwick Community Primary School
	Spaldwick	FE	Spaldwick Parish	Spaldwick	
	Easton	BC	Easton Parish	Easton	Church of St Peter, Easton
	Brington	AJ	The Brington part of the parish of Brington & Molesworth	Brington	St Leonards Hall, High Street, Brington
	Molesworth	AK	The Molesworth part of the parish of Brington & Molesworth	Molesworth	Molesworth Village Hall, Molesworth
	Buckworth	AN	Buckworth Parish	Buckworth	The Club Room, Cricket Club, Buckworth
	Bythorn	AR	The Bythorn part of the parish of Bythorn & Keyston	Bythorn	Bythorn Village Hall, Bythorn

<b>WARD</b>	<b>POLLING DISTRICT</b>	<b>PD CODE</b>	<b>DESCRIPTION OF POLLING DISTRICT</b>	<b>POLLING PLACE</b>	<b>PREFERRED POLLING STATION</b>
	Keyston	AS	The Keyston part of the parish of Bythorn & Keyston	Keyston	Keyston Village Hall, Keyston
	Catworth	AT	Catworth Parish	Catworth	Catworth Village Hall, Catworth
	Ellington	BD	Ellington Parish	Ellington	Ellington Village Hall
	Leighton Bromswold	DE	Leighton Bromswold Parish	Leighton Bromswold	The Old School House, Leighton Bromswold
	Old Weston	DL	Old Weston Parish	Old Weston	Old Weston Village Hall, Old Weston
	Stow Longa	FG	Stow Longa Parish	Stow Longa	The Old Barn, Spaldwick Road, Stow Longa
	Stow Longa	FK	The part of Stow Longa parish which includes Kimbolton Road	Stow Longa	
<b>Elton &amp; Folksworth</b>	Alwalton	AE	Alwalton Parish	Alwalton	Colonel Dane Memorial Hall, Alwalton
	Chesterton	AV	Chesterton Parish	Chesterton	
	Elton	BE	Elton Parish	Elton	Highgate Hall, Elton
	Folksworth & Washingley	BK	Folksworth & Washingley Parish	Folksworth	Folksworth Village Hall, Folksworth

<b>WARD</b>	<b>POLLING DISTRICT</b>	<b>PD CODE</b>	<b>DESCRIPTION OF POLLING DISTRICT</b>	<b>POLLING PLACE</b>	<b>PREFERRED POLLING STATION</b>
	Haddon	BV	Haddon Parish	Haddon	The Old Rectory, Haddon
	Morborne	DG	Morborne Parish	Haddon	
	Sibson cum Stibbington	FB	Sibson cum Stibbington Parish	Sibson cum Stibbington	The Christie Hall Stibbington, Elton Road, Wansford
	Water Newton	FV	Water Newton Parish	Sibson cum Stibbington	
<b>Fenstanton</b>	Fenstanton	BJ	Fenstanton Parish	Fenstanton	Church Centre, School Lane, Fenstanton

WARD	POLLING DISTRICT	PD CODE	DESCRIPTION OF POLLING DISTRICT	POLLING PLACE	PREFERRED POLLING STATION
Godmanchester	Godmanchester (part)	DA	That part of Godmanchester which includes the following roads:- Allen Farm Close, Almond Close, Anderson Crescent, Bascraft Way, Berry Lane, Bridge Place (Riverside Mill), Cambridge Road, Cambridge Street, Cambridge Villas, Chadley Lane, Church Place, Corpus Christi Lane, Cow Lane, Duck End, Earning Street, East Chadley Lane, Fairey Avenue, Field Walk, Fox Grove, Granary Close, Grove Court, Hilsdens Drive, Kisby Avenue, Lancaster Way, Laroc Close, Linden Grove, London Street, Meadow Way (Harcourt), Merton Walk, New Street, Oakleigh Crescent, Offord Road, Old Court Hall, Orchard Way, Park Lane, Pavillion Close, Pettit Road, Pinfold Lane (Oakleigh Crescent) (The Maltings), Pipers Lane, Post Street, Ravenshoe, Rectory Gardens, Roman Gate, Rushes Walk, Saxon Close, Silver Street, St Anns Lane, (Woodley Court), Stuart Close, Sylton Close, The Avenue, The Causeway, The Close, The Stiles, Tudor Road, West Street (Oak Tree Court) (The Chestnuts), White Hart Lane, Wigmore Close, Windsor Road, York Close.	Godmanchester	Queen Elizabeth School, Godmanchester

<b>WARD</b>	<b>POLLING DISTRICT</b>	<b>PD CODE</b>	<b>DESCRIPTION OF POLLING DISTRICT</b>	<b>POLLING PLACE</b>	<b>PREFERRED POLLING STATION</b>
	Godmanchester (part)	DB	That part of Godmanchester which includes the following roads:- Bascraft Way, Bath House Close, Bayliss, Bearscroft Lane, Bergamot Close, Betts Close, Bluegate, Brick Kilns, Butcher Drive, Buttermel Close, Carnaby Close, Cob Place, Comben Drive, Croftfield Road, Crowhill, Danescroft, Devana Close, Dove House Close, Earning Street, Ermine Street, Ferndown Drive, Fisher's Way, Foren Crescent, Golden Rod, Grainger Avenue, Greenacre Close, Gumcester Way, Hayling Close, Holmehill, Hudpool, Jarwood Walk, Lions Cross, Littlefield Close, London Road, London Street, Malecoff, Martin Close, Middlemiss View, Miller Close, Mowlands (McCartney House), Parcell Walk, Peate Close, Pinder Close, Porch Close, Port Holme Close, Roman Way, Rushes Walk, Sears Close, Silver Street, Stokes Drive, Sweetings Road, Thickwillow, Tudor Road.	Godmanchester	Judiths Field Hall, London Road, Godmanchester
<b>Gransden and the Offords</b>	Abbotsley	AA	Abbotsley Parish	Abbotsley	Abbotsley Village Hall, Abbotsley
	Great Gransden	BR	Great Gransden Parish	Great Gransden	The Reading Room, Great Gransden
	Great Paxton	BS	Great Paxton Parish	Great Paxton	Community Room, Great Paxton, Primary School
	Offord Cluny	DH	Offord Cluny Parish	Offord Cluny	Offord Village Hall, Offord Cluny
	Offord D'Arcy	DJ	Offord D'Arcy Parish	Offord Cluny	

<b>WARD</b>	<b>POLLING DISTRICT</b>	<b>PD CODE</b>	<b>DESCRIPTION OF POLLING DISTRICT</b>	<b>POLLING PLACE</b>	<b>PREFERRED POLLING STATION</b>
	Toseland	FM	Toseland Parish	Toseland	St Michael's Church, High Street, Toseland
	Waresley-cum-Tetworth	FT	Waresley-cum-Tetworth Parish	Waresley	Waresley Village Hall, Waresley
	Yelling	GE	Yelling Parish	Yelling	Yelling Village Hall, Yelling
<b>Huntingdon – East</b>	Huntingdon – East	CG	That part of Huntingdon Parish which includes the following roads:- Bradbury Place, Castle Hill, Castle Hill Court, Castle Hill Lane, Dallington Court, Euston Street, Hartford Road (part), High Street (St Clements Passage), Ingram Street, Montagu Road, Orchard Lane (Renton Court), Ouse Walk, Temple Close (Hemmdan Terrace), Temple Place, The Brow, The Walks East, Victoria Square, Waters Meet, Wood Street.	Huntingdon – East	Methodist Church Hall, High Street, Huntingdon
	Huntingdon – East	CH	That part of Huntingdon Parish which includes the following roads:- American Lane, Clayton's Way, Coldhams Crescent, Coldhams North, Coldhams South, Coronation Avenue, Cross Street, Desborough Road, Drivers Avenue, East Street, Frobisher Close, Greenhart Grove, Hardy Close, Hartford Road (part), Mayfield Crescent, Mayfield Road (Suffolk House), North Street, Nursery Road (Charlton House), Primrose Lane, Priory Grove, Priory Road, Queens Drive, Sapley Square, South Street, Suffolk Close (Grenville House), Tennis Court Avenue, West Street.	Huntingdon – East	MS Therapy Centre, Bradbury House, Mayfield Road, Huntingdon

WARD	POLLING DISTRICT	PD CODE	DESCRIPTION OF POLLING DISTRICT	POLLING PLACE	PREFERRED POLLING STATION
	Huntingdon – East	CJ	That part of Huntingdon Parish which includes the following roads:- Amners Close, Arundel Road, Barn Close, Buzzard Close, Capulet Court, Chapel Close, Charles Drive, Church Lane, Clare Road, Coneygear Road, Dene Close, Desborough Road, Drake Close, Duncan Way, Eagle Way, Eaton Close, Elizabeth Drive, Falcon Drive, Falstaff Way, Florida Avenue, Gardeners Lane, Girton Crescent, Goldfinch Close, Goshawk Close, Hall Close, Hamlet Close, Harrier Close, Hawk Drive, Hobby Close, Kestrel Close, Kings Close, Kite Close, Lark Crescent, Longstaff Way, Macbeth Close, Main Street, Manor View, Maryland Avenue, Merlin Close, Mill Close, Mill Road, Nelson Road, Newnham Close, Nightingale Close, Oberon Close, Old Houghton Road, Osprey Close, Othello Close, Owl Way, Pembroke Close, Pennington Road, Peregrine Close, Prospero Way, Rodney Road, Ruston Close, Sapley Park, Sapley Road, School Lane, Skeels Court, Snowy Way, Sparrowhawk Way, Stoney Close, Tawny Crescent, Thames Road, The Grove, The Hollow, The Spinney, Veasey Road, Wallace Court, Whitney Close.	Huntingdon – East	Hartford Village Hall, Main Street
	Huntingdon – East	CL	That part of Huntingdon Parish which includes the following roads:- Alberta Crescent, Alder Drive, Ambury Hill, Ambury Hill Walk, Ambury Road, American Lane, Ashton Gardens, Aspen Green, Avenue Road, Barleyfield Way, Bevan Close, Brookside, Bushey Close, Calafornia Road, Colebrook Road, Cowper Road, Coxon's Close (Wilberforce Terrace), Cromwell Square, Harebell Close, Hawthorn Drive, Hodson's Drive, Horsecommon Close, Horse Common Lane, Kings Gardens, Lammas Gardens, Lilyfield Crescent, Meadow Gardens, Mulberry Close, Priory Lane, Priory Road, Ryefield Close, Sparrow Close, Springfield, St Lukes Close, The Paddock, Wellsfield, Wheatstone Road	Huntingdon – East	Huntingdonshire Regional College, California Road

<b>WARD</b>	<b>POLLING DISTRICT</b>	<b>PD CODE</b>	<b>DESCRIPTION OF POLLING DISTRICT</b>	<b>POLLING PLACE</b>	<b>PREFERRED POLLING STATION</b>
	Huntingdon - East	CT	Desborough Road, Frobisher Close, Mayfield Road, Hardy Close	Huntingdon - East	Hartford Village Hall, Main Street
<b>Huntingdon – North</b>	Huntingdon – North	CN	That part of Huntingdon Parish which includes the following roads:- Armstrong Court, Ash Close, Beale Court, Beaton Crescent, Beaumont Close, Beech Close, Beevor Close, Bernard Close, Bradshaw Close, Burnett Way, Buttsgrove Way, Byron Close, California Road, Chestnut Close, Collinson Crescent, Coneygear Court, Coneygear Road, Cotton Court, Deal Close, Dover Close, Elm Close, Essex Road, Foster Court, Garner Court, Gimber Court, Godeby Court, Green Tiles Close, Hazelwood Walk, Howell Drive, Jackson Walk, Jeffrey Drive, Judson Court, Kent Road, Kings Ripton Road Sapley, Kingston Close, Lamport Drive, Lavender Court, Lawrence Close Sapley, Lucas Court, Maple Drive, Martin Luther King Close, Maule Close, Medway Road, Milton Close, Moorhouse Drive, Nene Road, Norfolk Road, Perkins Court Sapley, Poplar Close, Richmond Close, Robertson Way, Sallowbush Road, Sandwich Close, Sapley Road Hartford, Sapley Square, Saunders Close, Selby Court, Shelley Close, Silver Birch Close, Spring Close, St Barnabas Court, Surrey Road, Sycamore Drive, Tennyson Close, Thackray Close, The Whaddons, Thongsley, Tomlinson Court, Wolff Close	Huntingdon – North	St Barnabas Church Hall, Medway Road, Huntingdon



<b>WARD</b>	<b>POLLING DISTRICT</b>	<b>PD CODE</b>	<b>DESCRIPTION OF POLLING DISTRICT</b>	<b>POLLING PLACE</b>	<b>PREFERRED POLLING STATION</b>
<b>Huntingdon – West</b>	Huntingdon – West	CP	That part of Huntingdon Parish which includes the following roads:- All Saints Passage, Ambury Road South, Astilbe Lane, Blaines Court, Brampton Road (Station Cottages), Cherry Tree Close, Cromwell Court, Cromwell Mews, Cromwell Walk, Ermine Street, Ferrars Court, Ferrars Road, George Street (St Johns) (The Views), Great Northern Street, High Street (Manchester Place, Newtons Court, St Georges Court), Market Hill, Merritt Street, Mill Common, Parkside Grammar School Walk, Princes Street, Roscrea Court, Roscrea Terrace, Rowan Close, Royal Oak Passage, Sallowbush Road, Sayer Street (St Johns Terrace, St Andrews Court, Brooklands Terrace), St Johns Street, St Mary's Street, St Peters Road, Terril Close, The Walks East, The Walks North, Walden Grove, Walden Road, Walnut Tree Drive	Huntingdon – West	Civic Suite, Pathfinder House, St Mary's Street, Huntingdon
	Huntingdon – West	CR	That part of Huntingdon Parish which includes the following roads:- Bassenthwaite, Beacon Close, Blea Water, Blethan Drive, Boretree Way, Brigland Close, Burmoor Close, Buttermere, Coniston Close, Crummock Water, Derwent Close, Devoke Close, Elter Water, Ennerdale Close, Goodliff Close, Grasmere, Greendale, Haweswater, Knipe Close, Lake Way, Levers Water, Lindeth Close, Lingmoor, Loughrigg Close, Loweswater, North Side, Orthwaite, Overwater Close, Parkgate, Percy Green Place, Provence Road, Rydal Close, Salon Way, Seathwaite, Skeggles Close, South Side, St Peters Road, Stickle Close, Stukeley Road, Thirlmere, Thomas King Drive, Ullswater, Wastwater, Wertheim Way, West Side, Whinfell Close, Windermere	Huntingdon – West	Stukeley Meadows School, Stukeley Meadows, Huntingdon

<b>WARD</b>	<b>POLLING DISTRICT</b>	<b>PD CODE</b>	<b>DESCRIPTION OF POLLING DISTRICT</b>	<b>POLLING PLACE</b>	<b>PREFERRED POLLING STATION</b>
	Huntingdon – West	CS	That part of Huntingdon Parish which includes the following roads:- Bliss Close, Bradley Road, Brampton Road, Brecon Way, Burrows Drive, Christie Drive, Cromwell Drive, Dartmoor Drive, Dyson Close, Exmoor Close, Flamsteed Drive, Halley Close, Headlands, Hinchingsbrooke Park Road (Albert House) (Alexandra House) (Elizabeth House) (Victoria House), Lodge Close, Meadow Rise, Parkway, Peaks Court, Pond Close, Scholars Avenue, Snowdonia Way, The Copse, The Glades, The Poplars, The Shrubbery, The Vale, Woodlands.		Cromwell Academy, Parkway, Hinchingsbrooke Park, Huntingdon
<b>Kimbolton &amp; Staughton</b>	Covington	AY	Covington Parish	Covington	Covington Village Hall, Covington
	Great Staughton	BT	Great Staughton Parish	Great Staughton	Gt Staughton Village Hall, Great Staughton
	Hail Weston	BW	Hail Weston Parish	Hail Weston	Hail Weston Village Hall, Hail Weston
	Kimbolton & Stonely	DC	Kimbolton & Stonely Parish	Kimbolton	The Mandeville Hall, Kimbolton
	Tilbrook	FL	Tilbrook Parish	Tilbrook	Tilbrook Village Hall, Tilbrook
<b>Little Paxton</b>	Little Paxton	DF	Little Paxton Parish	Little Paxton	Little Paxton Village Hall, Little Paxton

<b>WARD</b>	<b>POLLING DISTRICT</b>	<b>PD CODE</b>	<b>DESCRIPTION OF POLLING DISTRICT</b>	<b>POLLING PLACE</b>	<b>PREFERRED POLLING STATION</b>
<b>Ramsey</b>	Ramsey (Town)	DR	That part of Ramsey Parish which includes the following roads:- Biggin Lane, Blenheim Road, Brands Close, Bryan Close, Bury Road, Canberra Court, Charles Close, Cricketfield Lane, Cromwell Close, Darling Mews, Drayhorse Road, Fairfields Drive, Fellowes Drive, Field Road, Flask Walk, Freeman Terrace, Great Whyte, Grenfell Road, High Street, Hildred Court, Hopbine Court, Lion Yard, Malthouse Lane, Mews Close, Milton Close, Oast House Way, Old Station Road, Oliver Close, Palmer Close, Park Road, Pathfinder Way, Queen Mary Close, Queens Walk, School Lane, Serjeants Close, Slade Close, Spinning Court, St Marys Road, Station Road, Taverners Drive, Temperance Court, The Avenue, The Malting, West Avenue, Wheatfield Drive, Whytefield Road, Wyatt Close.	Ramsey (Town)	Ramsey Royal British, Legion Hall, Cricket Field Lane
	Ramsey Heights	DS	The Ramsey Heights part of the Ramsey Parish	Ramsey Heights	306 Uggmere Court Road Ramsey Heights
	Ramsey St Mary's	DT	The Ramsey St Mary's part of the Ramsey Parish	Ramsey St Mary's	The Barn Ashbeach School, Ashbeach Drove, Ramsey St Marys
	Ramsey Mereside	DV	The Ramsey Mereside part of the Ramsey Parish	Ramsey Mereside	Ramsey Mereside Village Hall, Ramsey Mereside
	Ramsey Forty Foot	DW	The Ramsey Forty Foot part of the Ramsey Parish	Ramsey Forty Foot	Ramsey Forty Foot, Village Hall, Ramsey Forty Foot

<b>WARD</b>	<b>POLLING DISTRICT</b>	<b>PD CODE</b>	<b>DESCRIPTION OF POLLING DISTRICT</b>	<b>POLLING PLACE</b>	<b>PREFERRED POLLING STATION</b>
	Ramsey (Town)	DX	That part of Ramsey Parish which includes the following roads:- Abbey Fields, Abbey Road, Abbey Rooms Lane, Abbey Terrace, Abbots Close, Allen Road, Bankers Walk, Becketts Close, Burybrooke Court, Church Green, Conley Close, Crown Mews, Ethelred Close, Factory Bank, Field Road, Fisher Terrace, Fletchers Close, Flowers Close, Granary Court, Great Whyte, Hawthorn Road, High Street, Hollow Lane, James Court, Jones Court, Lawrence Road, Lime Road, Lion Yard, Little Whyte, Longlands Court, Malting Yard, Marriotts Yard, Meadow Walk, Mill Lane, Millfields, New Road, Newtown Road, North Walk, Oates Way, Orchard Way, Oswald Close, Parkholme Gardens, Princes Street, Rudds Court, Scotts Row, Silver Street, South Walk, Spencer Court, St Marys Road, Star Lane, Station Gardens, Station Road, The Hollow, The Pavement, Tower Close, Turvers Lane, Vinery Court, Westfield Road, Whyte Court, Whytefield Road, Wood Lane	Ramsey (Town)	Ramsey Library, Great Whyte, Ramsey
<b>Sawtry</b>	Conington	AX	Conington Parish	Conington	Virgina Cottage, Church Road, Conington
	Glatton	BL	Glatton Parish	Glatton	Glatton Village Hall, Glatton
	Great and Little Gidding	BN	Great Gidding Parish	Great and Little Gidding	Great Gidding Village Hall, Great Gidding
		BP	Little Gidding Parish	Great and Little Gidding	
	Hamerton & Steeple Gidding	BX	Hamerton & Steeple Gidding Parish	Hamerton and Steeple Gidding	Hamerton Village Hall, Hamerton

<b>WARD</b>	<b>POLLING DISTRICT</b>	<b>PD CODE</b>	<b>DESCRIPTION OF POLLING DISTRICT</b>	<b>POLLING PLACE</b>	<b>PREFERRED POLLING STATION</b>
	Sawtry	FA	Sawtry Parish	Sawtry	The Old School Hall, 37 Green End Road, Sawtry
	Upton & Coppingford	FN	Upton & Coppingford Parish	Upton	Upton Village Hall, Upton
	Winwick	FW	Winwick Parish	Winwick	Winwick Village Hall, Winwick
<b>Somersham</b>	Broughton	AL	Broughton Parish	Broughton	Broughton Village Hall, Broughton
	Colne	AW	Colne Parish	Colne	Colne Community Hall, East Street, Colne
	Old Hurst	DK	Old Hurst Parish	Old Hurst	11 Lancaster Close, Old Hurst
	Pidley-cum-Fenton	DN	Pidley-cum-Fenton Parish	Pidley-cum-Fenton	Pidley Village Hall, Pidley
	Somersham	FC	Somersham Parish	Somersham	Victory Hall, Parkhall Road, Somersham
	Woodhurst	FY	Woodhurst Parish	Woodhurst	Woodhurst Village Hall, Woodhurst

<b>WARD</b>	<b>POLLING DISTRICT</b>	<b>PD CODE</b>	<b>DESCRIPTION OF POLLING DISTRICT</b>	<b>POLLING PLACE</b>	<b>PREFERRED POLLING STATION</b>
<b>St Ives – East</b>	St Ives East	DY	That part of St Ives Parish (East Ward) which includes the following roads:- Albermarle Road, Anson Drive, Arran Way, Barley Close, Bedford Crescent, Bittern Close, Bleheim Drive, Burleigh Road, Cambridge Drive, Canberra Drive, Comet Way, Constable Road, Curlew Close, Da Vinci Close, Degas Drive, Devon Close, Edinburgh Drive, Fraser Drive, Gainsborough Drive, Grafton Close, Grebe Close, Heron Way, Hill Rise, Hogarth Close, Holbein Road, Kent Close, Kestrel Close, Kingfisher Green, Lancaster Drive, Lincoln Avenue, Lowry Close, Lysander Close, Manchester Way, Marlborough Close, Milton Close, Monet Close, Morland Way, Norfolk Road, Ramsey Road, Rembrandt Way, Renoir Close, Reynolds Close, Romney Close, Rubens Way, Rutland Close, Salisbury Close, Sandwich Close, Spencer Drive, Stirling Road, Stubbs Close, Suffolk Close, Swan Close, Teal Close, The Mallards, The Whistlers, Turner Road, Valiant Road, Van Dyke Place, Van Gough Place, Victor Close, Wellington Avenue, Windsor Close, Witham Close, York Way.	St Ives East	Burleigh Hill, Community Centre, Constable Road
	St Ives East	DZ	That part of St Ives Parish (East Ward) which includes the following roads:-Abbots Crescent, All Saints Close, All Saints Green, Alwyn Close, Bure Close, Burstellers, Cam Close, Chelmer Close, Dart Close, Deben Avenue, Derwent Close, Dovey Close, Erica Road, Forsythia Road, Garden Close, Gosslan Close, Granta Close, Heddon Way, Ilex Road, Kings Hedges, Kingsbrook, Lavender Way, Leger Close, Nene Way, Orwell Close, Ouse Road, Ramsey Road, Redmoor Close, Ribble Close, Somersham Road, Spinney Way, Stour Close, Tamar Close, Tay Close, The Pound, Trent Close, Waveney Road, Welland Close, Wensum Close, Wheatfields, Witham Close.	St Ives East	Burleigh Hill, Community Centre, Constable Road

<b>WARD</b>	<b>POLLING DISTRICT</b>	<b>PD CODE</b>	<b>DESCRIPTION OF POLLING DISTRICT</b>	<b>POLLING PLACE</b>	<b>PREFERRED POLLING STATION</b>
	St Ives East	EA	That part of the St Ives Parish (East Ward) which includes the following roads:- Old Ramsey Road.	St Ives East	Burleigh Hill Community Centre, Constable Rd, St Ives
<b>St Ives – South</b>	St Ives South	EB	That part of the St Ives Parish (South Ward) which includes the following roads:- Adams Drive, Bridge Street, Bridge Terrace, Broad Leas Court, Broad Leas, Brook Way, Broom Way, Bull Lane, Burleigh Terrace, Burstellers, Chapel Court, Chapel Lane, Coach Mews, Collingwood Close, Cootes Meadow, Cow and Hare Passage, Cromwell Place, Cromwell Terrace, Crown Close, Crown Street, Crown Walk, Darwood Court, Darwood Place, Deighton Close, East Street, Elsworth Close, Enderbys Wharf, Faifields Crescent, Fairfields, Farthing Lane, Gorse Way, Great Farthing Close, Grove Court, Hawthorn Way, Hazel Way, Keln Leas, Kings Road, Laburnum Way, Landcliffe Close, Lilac Way, Little Farthing Close, London Road, Low Road, Market Hill, Meadow Close, Meadow Lane, Merryland, Myrtle Green, Needingworth Road, New Road, Nicholas Lane, North Road, Nursery Gardens, Oldman Court, Orchard Terrace, Oxford Road, Park Avenue, Park Road, Parkside, Parkway, Pig Lane, Priory Mews, Priory Road, Quay Court, Ramsey Road, River Place, Robbs Walk, Rookery Close, Rushington Close, Russet Close, Sheep Market, Sheepfold, Skelton Place, St Audrey Close, St Audrey Lane, St Georges Road, St Johns Road, Station Road, Tannery Mews, Tenterleas, The Broadway, The Pavement, The Quadrant, The Quay, The Waits, The Wilderness, Vine Court, Warners Grove, Warren Road, Wellington Street, West Street, White Hart Court, White Hart Lane, Willow Way, Woodside Way, Woolpack Lane.	St Ives South	Sacred Heart Church Hall, Needingworth Road, St Ives

<b>WARD</b>	<b>POLLING DISTRICT</b>	<b>PD CODE</b>	<b>DESCRIPTION OF POLLING DISTRICT</b>	<b>POLLING PLACE</b>	<b>PREFERRED POLLING STATION</b>
	St Ives South	EC	That part of the St Ives Parish (South Ward) which includes the following roads:- Admans Drive, Brigham Crescent, Broad Leas, Burgess Walk, Burstellars, Church Street, Clare Court, Copperbeeche Close, Goodman Close, Green End Barns, Green Lane, Green Leys, Greengarth, Harvest Court, High Leys, Houghton Road, Hurstingstone, Knights Way, Lammas Way, Langley Close, Langley Court, Leas Close, Links Way, Norris Road, North Road, Paragon Road, Pig Lane, Queens Close, Ramsey Road, St Audrey Lane, Stanpoint Way, The Crescent, The Drive, The Furrows, The Pound, West Leys, Westbury Road, Westwood Close, Westwood Road, Whitecross.	St Ives South	Crossways Christian Centre, Ramsey Rd, St Ives
<b>St Ives – West</b>	St Ives West	ED	That part of the St Ives Parish (West ward) which includes the following roads:- Acacia Avenue, Alabama Way, Ansley Way, Audley Close, Beech Drive, Blackmills Road, Burns Way, Bury Close, Bury Way, California Road, Cedar Road, Chaucer Way, Chestnut Close, Chestnut Road, Clark Drive, Cordell Close, Dryden Close, Elm Drive, Freston Close, Garner Drive, Goldie Close, Great How, Grebe Close, Green How, Hill Rise, Houghton Road, Hurstingstone, Kestrel Close, Kiln Close, Little How, Lorna Court, Meadow How, Michigan Road, Milton Close, Oak Tree Close, Old Ramsey Road, Pettis Road, Pettis Walk, Ramsey Road, Redwell Close, Scrolans, Shakespeare road, Sharp Close, Silver Birch Avenue, Tennyson Avenue, The Crescent, Thorndown Close, Virginia Way.	St Ives West	One Leisure, St Ives Outdoor Centre
	St Ives West	EX	Beech Drive, Houghton Road, Oak Tree Close, Hurstingstone, Elm Drive, The Crescent	St Ives West	Crossways Christian Centre, Ramsey Rd, St Ives



WARD	POLLING DISTRICT	PD CODE	DESCRIPTION OF POLLING DISTRICT	POLLING PLACE	PREFERRED POLLING STATION
<b>St Neots – Eaton Ford</b>	St Neots – Eaton Ford	EN	That part of the St Neots Parish (Eaton Ford Ward) which includes the following roads:- Alamein Court, Apple Grove, Arnhem Close, Blenheim Close, Bradshaws Court, Brook Road, Browning Drive, Burns Court, Byron Place, Chaucer Place, Coleridge Court, Constable Avenue, Corunna Close, Cowper Court, Crecy Court, Crosshall Park Court, Crosshall Road, Culloden Close, Eaton Ford Green, Fielding Court, Ford Close, Gainsborough Avenue, Gorham Place, Great North Road, Green Gables, Hanover Close, Hardy Place, Hogarth Place, Inkerman Rise, Ivel Close, Jutland Rise, Keats Court, Kipling Place, Kym Road, Lawrence Road, Laxton Close, Linclare Place, Longfellow Place, Lowry Road, Marlowe Court, Masefield Avenue, Mill Hill Road, Milton Avenue, Minden Court, Nene Road, Orchard Close, Orchard Road, Ouse Road, Reynolds Court, River Road, Romney Court, Rosamund Mews, Saviles Close, Shelley Place, Spencer Close, St Neots Road, Stevenson Court, Tennyson Place, The Paddock, Trafalgar Road, Turner Road, Weir Cottage Close, Wellend Court, Weston Court, Whinfell Close, Whistler Road, Wordsworth Avenue.	St Neots – Eaton Ford	The Scout Hall, Mill Hill Road, Eaton Ford

<b>WARD</b>	<b>POLLING DISTRICT</b>	<b>PD CODE</b>	<b>DESCRIPTION OF POLLING DISTRICT</b>	<b>POLLING PLACE</b>	<b>PREFERRED POLLING STATION</b>
	St Neots – Eaton Ford	EP	That part of the St Neots Parish (Eaton Ford Ward) which includes the following roads:- Alder Close, Axis Way, Beaver Close, Beezling Close, Begwary Close, Bilberry Close, Burwell Close, Chawston Close, Cornwall Court, Crosshall Road, Duloe Brook, Duloe Road, Edinburgh Drive, Elizabeth Court, Fallow Drive, Farcet Close, Foxglove Close, Gazelle Close, Gery Court, Great North Road, Hemsals, Honeydon Avenue, Langwood Close, Lottings Way, Meadowsweet, Milestone Close, Monarch Road, Mountbatten Court, Mullein Close, Muntjac Close, Orchid Close, Osier Court, Otter Way, Queens Gardens, Roe Green, Royal Court, Sambar Close, Setchel, Silverweed, Squires Court, Staughton Place, Sundew Close, Tansy Close, Teasel Close, Teversham Way, The Hallards, The Maltings, Valerian Close, Wistow Court, Wyboston Court.	St Neots – Eaton Ford	Eatons Community Centre, The Maltings, Eaton Socon
<b>St Neots – Eaton Socon</b>	St Neots – Eaton Socon	ER	That part of the St Neots Parish (Eaton Socon Ward) which includes the following streets:- Ackerman Gardens, Ackerman Street, Addington Walk, Avon Court, Barley Road, Capulet Close, Castle Hill Close, Clover Road, Collingwood Road, Colmworth Gardens, Drake Road, Falstaff Road, Field Cottage Road, Great North Road, Grenville Way, Hathaway Close, Kenilworth Close, Manor House Close, Marlborough Road, Nelson Road, Old School Gardens, Peppercorn Lane, Roberts Close, School Lane, Shakespeare Road, Simpkin Close, Stratford Place, The Crescent, Warwick Court, Wheatsheaf Road, Wilkinson Close.	St Neots – Eaton Socon	The Jubilee Hall, School Lane, Eaton Socon

<b>WARD</b>	<b>POLLING DISTRICT</b>	<b>PD CODE</b>	<b>DESCRIPTION OF POLLING DISTRICT</b>	<b>POLLING PLACE</b>	<b>PREFERRED POLLING STATION</b>
	St Neots – Eaton Socon	ES	That part of the St Neots Parish (Eaton Socon Ward) which includes the following roads:- Admirals Way, Anson Place, Baron Court, Beatty Road, Beauchamp Close, Blackwood Road, Blakes Way, Bushmead Gardens, Bushmead Road, Byng Close, Codrington Court, Cornwallis Drive, Countess Close, Crown Walk, Cunningham Way, Darrington Close, Digby Court, Duchess Close, Dukes Road, Duloe Brook, Earl Close, Freemantle Court, Great North Road, Hargood Court, Jellicoe Place, Jenkins Close, Kings Road, Knights Close, Lady Way, Linton Close, Marchioness Way, Marquis Close, Monarch Road, Nelson Road, Ockenden Close, Peer Road, Popham Close, Prince Close, Queens Court, Queens Gardens, Raleigh Close, Regent Close, Sycamore Close, Vicarage Gardens, Viceroy Close, Viscount Court, Whinfell Close	St Neots – Eaton Socon	Bushmead School, Bushmead Road, Eaton Socon
<b>St Neots – Eynesbury</b>	St Neots – Eynesbury	EF	That part of the St Neots Parish (Eynesbury Ward) which includes the following roads:- Barford Road, Belmont Close, Berkley Court, Berkley Street, Buckley Road, Burnt Close, Caldecote Road, Chestnut Grove, Cromwell Court, Cromwell Road, Eynesbury Green, Fairfax Court, Ferrars Avenue, Folly Close, Glenariff Close, Hall Road, Hardwick Road, Harvey Street, Howitts Lane, Humberley Close, Ireton Close, Jubilee Close, Lansbury Close, Laurels Close, Lee Court, Linley Road, Luke Street, Montagu Court, Montagu Square, Montagu Street, Mountfort Close, Navigation Wharf, Old School Yard, Pope Road, Saxon Place, Shirdley Road, Silver Street, Springbrook, St Marys Court, St Marys Street, The Broad Walk, Toller Mews, Washbank Road, Waterloo Drive, Waterloo Farm Close, Wildber Close, Willow Close.	St Neots – Eynesbury	New Methodist Church Hall, Berkley Street, Eynesbury

WARD	POLLING DISTRICT	PD CODE	DESCRIPTION OF POLLING DISTRICT	POLLING PLACE	PREFERRED POLLING STATION
	St Neots – Eynesbury	EG	That part of the St Neots Parish (Eynesbury Ward) which includes the following roads:- Brampton Gardens, Browns Square, Cambridge Street, Cemetery Road, Charles Street, Cromwell Gardens, Dryden Court, Duck Lane, Eayre Court, Henbrook, Mallard Lane, Manor Farm Road, Manor Grove, Manor Park, Marshall Road, Medland Grove, Musgrave Way, Naseby Gardens, Nursery Road, Pepys Road, Sandfields Road, Shortsands Yard, Whitehall Walk, Wintringham Road.	St Neots – Eynesbury	Bargroves Resource Centre, Cromwell Rd, Eynesbury, St Neots
	St Neots – Eynesbury	EH	That part of the St Neots Parish (Eynesbury Ward) which includes the following roads:- Alnwick Court, Andrew Road, Arundel Crescent, Bakers Link, Balmoral Way, Banks Court, Barford Road, Barnard Close, Baxter Drive, Beacon Close, Bellamy Close, Bevington Way, Bishops Road, Blair Way, Bluebell Walk, Bodiam Way, Brittain Close, Burr Close, Buttercup Avenue, Caernarvon Road, Carisbrooke Way, Cawdor Place, Chapman Way, Chesterfield Way, Compton Close, Conway Place, Cook Drive, Corfe Place, Criccieth Way, Crocus Close, Cumberland Way, Daffodil Close, Delphinium Court, Dunster Way, Edward Road, Elm Villa Gardens, Fern Court, Flawn Way, Flint Way, George Place, Glamis Court, Hampden Way, Harlech Court, Howitts Gardens, Howitts Lane, James Court, Jennings Avenue, Knaresborough Court, Lindisfarne Close, Malden Way, Mallow Close, Maule Close, Parker Close, Pashley Court, Pearson Close, Pembroke Avenue, Penrwyn Court, Philip Gardens, Potton Road, Powis Place, Ream Close, Richmond Close, Ridgeway, Rye Close, Shepherd Drive, St Neots Mobile Home Park, Stocker Way, Tenby Way, Tintagel Court, William Drive, Windsor Close, Wren Walk.	St Neots – Eynesbury	Ernulf Academy, Barford Road, Eynesbury

WARD	POLLING DISTRICT	PD CODE	DESCRIPTION OF POLLING DISTRICT	POLLING PLACE	PREFERRED POLLING STATION
<b>St Neots – Priory Park</b>	St Neots – Priory Park	EJ	That part of the St Neots Parish (Priory Park Ward) which includes the following roads:- Bedford Street, Brook Street, Cambridge Street, Cemetery Road, Chandlers Wharf, Church Meadows, Church Street, Church View, Church Walk, Fishers Yard, Friars Court, Grosvenor Gardens, High Street, Huntingdon Street, Ingles Court, Knights Court, Market Square, Meadow Close, New Street, Old Bull Yard, Old Market Court, Priory Lane, Priory Road, River Terrace, Russell Court, Russell Street, South Street, St Anselm Place, Tan Yard, Tebbutts Road, The Close, The Old Dairy, The Priory, Ware Road, West Street, Windmill Row.	St Neots – Priory Park	St Neots Voluntary Centre, Church Walk, St Neots

WARD	POLLING DISTRICT	PD CODE	DESCRIPTION OF POLLING DISTRICT	POLLING PLACE	PREFERRED POLLING STATION
	St Neots - Priory Park	EL	That part of the St Neots Parish (Priory Park Ward) which includes the following roads:- Acacia Grove, Almond Road, Avenue Road, Barnes Close, Barringer Way, Bean Close, Bedford Street, Beech Grove, Cambridge Gardens, Cambridge Street, Chamberlain Way, Childs Pond Road, Cressener Terrace, Curlew Place, Dewpond Close, Dovehouse Close, Eagle Court, East Street, Emery Place, Falcon Close, Fox Close, Fydell Court, Grebe Way, Green End Road, Greenfields, Harland Road, Hatley Close, Hawksford Way, Hawthorn Road, Heron Court, Hill Rise, Huntingdon Road, Huntingdon Street, Kestrel Place, Kings Lane, Kings Road, Lamma Way, Leys Road, Lime Grove, Longsands Parade, Longsands Road, Merlin Close, Mill Lane, Murrell Close, Murrell Court, Nightingale Way, Oak Close, Park Road, Parkway, Phoenix Square, Princes Drive, Prospect Row, Queensway, Raven Close, Redwing Place, Riversmead, Rowley Road, Rycroft Avenue, Sandwich Road, Shaftesbury Avenue, Springfield Close, Station Road, Sunnybank, Swallow Court, Swift Close, Tansur Court, Tern Way, The Crescent, The Grove, Topham Court, Woodlands.	St Neots - Priory Park	Longsands Academy, Longsands Road

<b>WARD</b>	<b>POLLING DISTRICT</b>	<b>PD CODE</b>	<b>DESCRIPTION OF POLLING DISTRICT</b>	<b>POLLING PLACE</b>	<b>PREFERRED POLLING STATION</b>
	St Neots - Priory Park	ET	That part of the St Neots Parish (Priory Park Ward) which includes the following roads:- Alsop Way, Alvey Road, Anderson Close, Ash Tree Lane, Bargroves Avenue, Bawlins, Belland Hill, Briar Court, Cambridge Road, Clark Drive, Cockrells, Day Close, Dixy Close, Dramsell Rise, Embry Drive, Field Gate Close, Fox Brook, Fox Covert, Furrowfields, Gorham Way, Gorse Crescent, Great High Ground, Harvest Drive, Hogsden Leys, Hull Way, Lannesbury Crescent, Leightonhouse Close, Leveret Way, Loves Way, Lucas Crescent, Middle Ground, Oliver Way, Paddock Close, Pattison Court, Priory Hill, Radland Close, School Drive, Station Square, Stone Hill, The Pastures, The Runnells, The Warren, Top Birches, Waterland, Whiston Way, Whitchurch Walk, Wood Ridge Crescent.	St Neots - Priory Park	Love's Farm House, Kester Way, Love's Farm
<b>Stilton</b>	Holme	CC	Holme Parish	Holme	The Admiral Wells, Station Road
	Denton and Caldecote	AZ	Denton & Caldecote Parish	Stilton	Stilton Pavilion, Stilton
	Stilton	FF	Stilton Parish	Stilton	
<b>The Hemingfords</b>	Hemingford Abbots	BZ	Hemingford Abbots Parish	Hemingford Abbots	Hemingford Abbots, Village Hall, Hemingford Abbots
	Hemingford Grey	CA	Hemingford Grey Parish	Hemingford Grey	St James Parish Centre, 33 High Street, Hemingford Grey

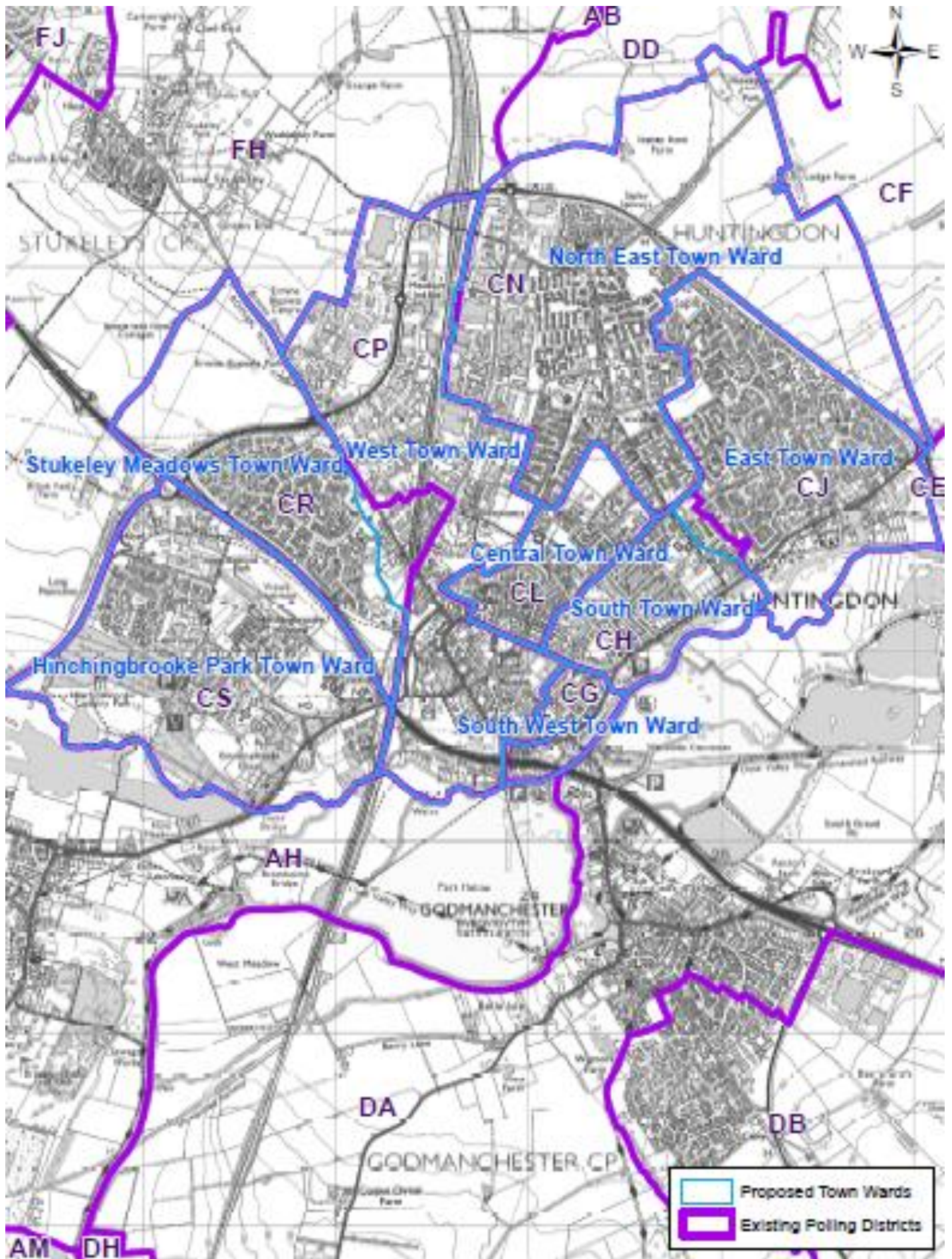
<b>WARD</b>	<b>POLLING DISTRICT</b>	<b>PD CODE</b>	<b>DESCRIPTION OF POLLING DISTRICT</b>	<b>POLLING PLACE</b>	<b>PREFERRED POLLING STATION</b>
	Hilton	CB	Hilton Parish	Hilton	Hilton Village Hall, Hilton
	Houghton & Wyton	CE	The Houghton & Wyton Parish (Houghton & Wyton Ward)	Houghton	Houghton & Wyton Memorial Hall, Houghton
<b>Upwood and The Raveleys</b>	Abbots Ripton	AB	Abbots Ripton Parish	Abbots Ripton	Abbots Ripton Village Hall, Abbots Ripton
	Kings Ripton	DD	Kings Ripton Parish	Kings Ripton	Kings Ripton Village Hall, Kings Ripton
	Upwood and The Raveleys	FP	Upwood and The Raveleys Parish	Upwood	Upwood Village Hall, Upwood
	Woodwalton	GA	Woodwalton Parish	Woodwalton	Woodwalton Village Hall, Woodwalton
	Wyton-on-the-Hill	CF	Wyton-on-the-Hill Parish	Wyton	Wyton on the Hill, Primary School, Cambridge Square
<b>Warboys and Bury</b>	Bury	AP	Bury Parish	Bury	Bury Village Hall, Bury
	Warboys	FR	Warboys Parish	Warboys	Parish Centre, Warboys
	Warboys Fen	FS	Warboys Fen part of Warboys Parish	Warboys	
	Wistow	FX	Wistow Parish	Wistow	Wistow Village Hall



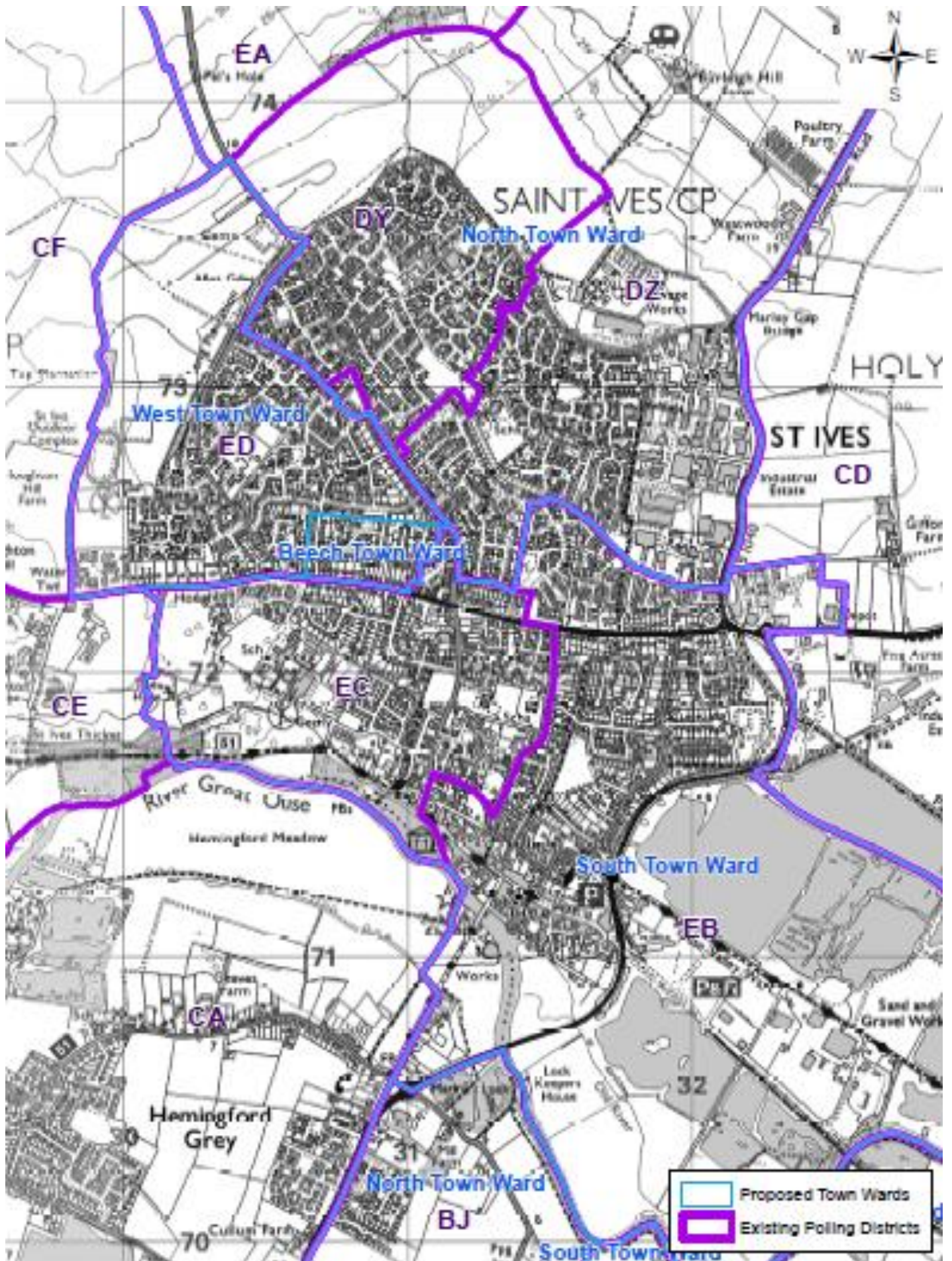
<b>WARD</b>	<b>POLLING DISTRICT</b>	<b>PD CODE</b>	<b>DESCRIPTION OF POLLING DISTRICT</b>	<b>POLLING PLACE</b>	<b>PREFERRED POLLING STATION</b>
<b>Yaxley and Farcet</b>	Farcet	BH	Farcet Parish	Farcet	Farcet Village Hall
	Yaxley	GB	That part of the Yaxley Parish which includes the following roads:- Abbott Way, Allard Close, Alvis Drive, Aston Close, Austin Court, Baird Close, Beauvoir Place, Bentley Avenue, Blenheim Way, Broadway, Broadway, Brunel Drive, Carysfort Close, Chapel Street, Church Street, Church Walk, Cock Close Road, Cookson Close, Cookson Walk, Daimler Avenue, Dovecote Lane, Edison Drive, Faraday Close, Ferndale, Field Rise, Fleming Close, Folly Close, Ford Close, Great North Road, Green Lane, Hillcrest Avenue, Humber Drive, Jayenn Close, Kingfisher Close, Laurel Close, Lawn Close, Lee Road, Livingstone Road, London Road, Main Street, Mallory Drive, Manor Close, Marconi Drive, Marlborough Close, Middletons Road, Morgan Close, Morris Court, Mountbatten Avenue, Nightingale Drive, Owl End Walk, Partridge Close, Pheasant Way, Pooley Way, Proby Close, Riley Close, Rolls Close, Royce Close, Scott Drive, Seaton Close, Shackleton Way, Stephenson Close, Stonehouse Road, Telford Drive, The Rookery, Vicarage Way, West End, Westfield Close, Westfield Road, Wisteria Road, Wolseley Close, Wykes Road, Yards End Lane	Yaxley	Royal British Legion Hall, 210 Broadway, Yaxley

WARD	POLLING DISTRICT	PD CODE	DESCRIPTION OF POLLING DISTRICT	POLLING PLACE	PREFERRED POLLING STATION
	Yaxley	GC	That part of the Yaxley Parish which includes the following roads:- Apple Tree Close, Ashridge Walk, Askews Lane, Azalea Court, Badger Close, Beatons Close, Bellflower Drive, Birch Close, Bramble Close, Briar Court, Broadway, Cherrytree Walk, Clover Court, Crane Avenue, Crocus Way, Daffodil Court, Elm Close, Foxglove Close, Freesia Way, Great Drove, Harebell Drive, Hawthorn Road, Highfield Walk, Hillside Walk, Holme Road, Jasmine Way, Laburnum Avenue, Lancaster Court, Lancaster Walk, Lancaster Way, Lansdowne Road, Larch Close, Lavender Close, Lilac Walk, Lime Tree Close, Litchfield Close, Main Street, Malting Square, Maple Court, Meadow Walk, Mere View, Middletons Road, Mulberry Close, Narrow Drove, Needham Court, Oak Court, Orchard Walk, Orchid Close, Park Close, Peartree Walk, Poppy Close, Primrose Drive, Queen Street, Rose Court, Rosewood Close, Silverwood Walk, Southdown Road, Speechley Road, Springfield Road, St Peters Walk, The Green, Thistle Close, Violet Way, Vixen Close, Whitney Drive, Windsor Road.	Yaxley	Owen Pooley Hall, Main Street, Yaxley

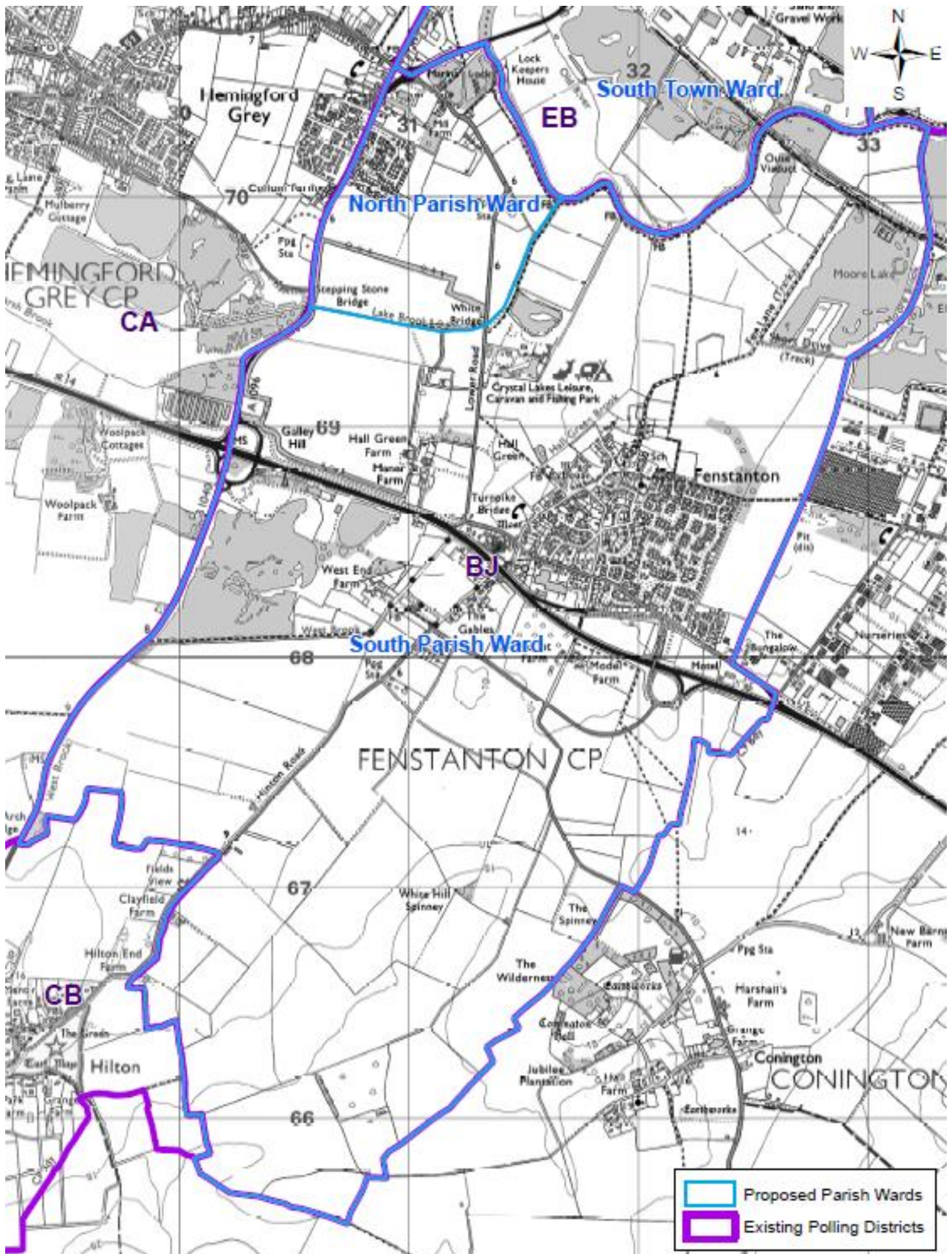
APPENDIX B – MAP SHOWING PROPOSED NEW POLLING DISTRICTS IN HUNTINGDON



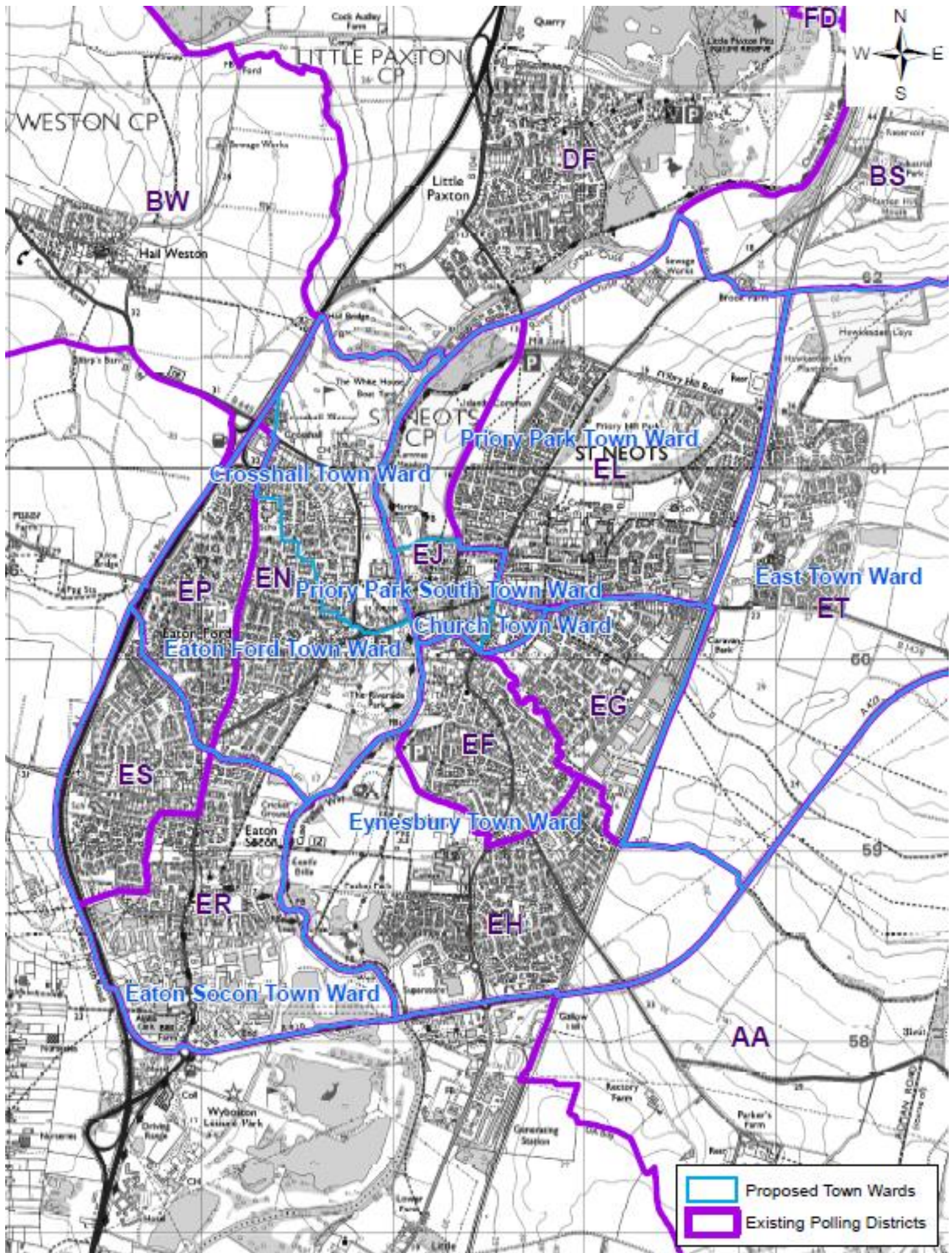
APPENDIX C – MAP SHOWING PROPOSED NEW POLLING DISTRICTS IN ST IVES



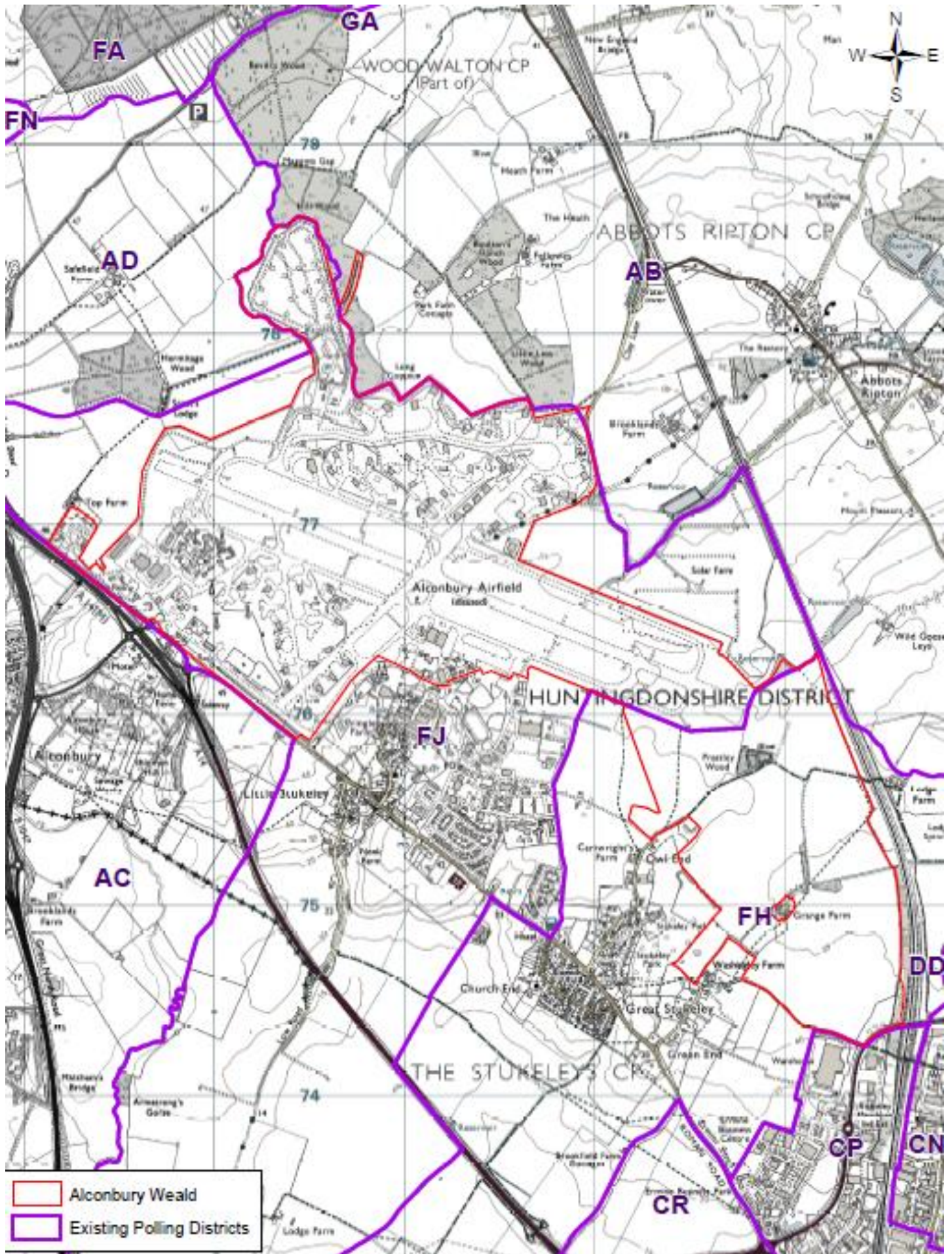
APPENDIX D – MAP SHOWING PROPOSED POLLING DISTRICTS IN FENSTANTON



APPENDIX E – MAP SHOWING PROPOSED POLLING DISTRICTS IN ST NEOTS



APPENDIX F – MAP SHOWING PROPOSED POLLING DISTRICT OF ALCONBURY WEALD



## **APPENDIX G – RESPONSES TO CONSULTATION**

### **Councillor R Fuller**

I note the following:

*'Polling district ED in St Ives will be amended to allow for the creation of a new polling district for the new St Ives Beech Town ward. It will therefore be necessary to identify a suitable venue for a polling station to accommodate this new Town ward.'*

Does this polling district have to have a separate polling station to the remainder of the West Ward? It seems absurd to create more work for HDC at elections by having yet another polling station for what is still one District ward that has not changed in size. Why can't both polling districts continue to vote at the Outdoor Centre as the electors of the West Ward currently do?

### **Warboys Parish Council**

The Parish Council support the proposals in terms of their effect on Warboys, i.e. the status quo.

### **Hemingford Grey Parish Council**

Hemingford Grey Parish Council considered this at its meeting last night, but did not feel that it was relevant to Hemingford Grey.

### **Spaldwick Parish Council**

Spaldwick Parish Council met on 15 Dec 16 and discussed the issue re: Community Room at Spaldwick Primary School and it was resolved to inform you that Parish Council recommend that the Community Room is available for polling. People who come to vote do not access school. And if such an access is required, people can be escorted to use the toilets facilities. Security if needed can be arranged.

### **Great Paxton Parish Council**

Regarding your most recent email on the 'Interim Review of Polling Districts, Polling Places and Polling Stations' – as this review has no impact on the Parish, Great Paxton Parish Council has no comments to make on your proposals/recommendations.

### **St Ives Town Council**

We don't believe that there should be a separate ward and polling station for the "Beech Town Ward". We also have concerns for those from Fenstanton who would have to go to different locations for different elections which might be held on the same day.